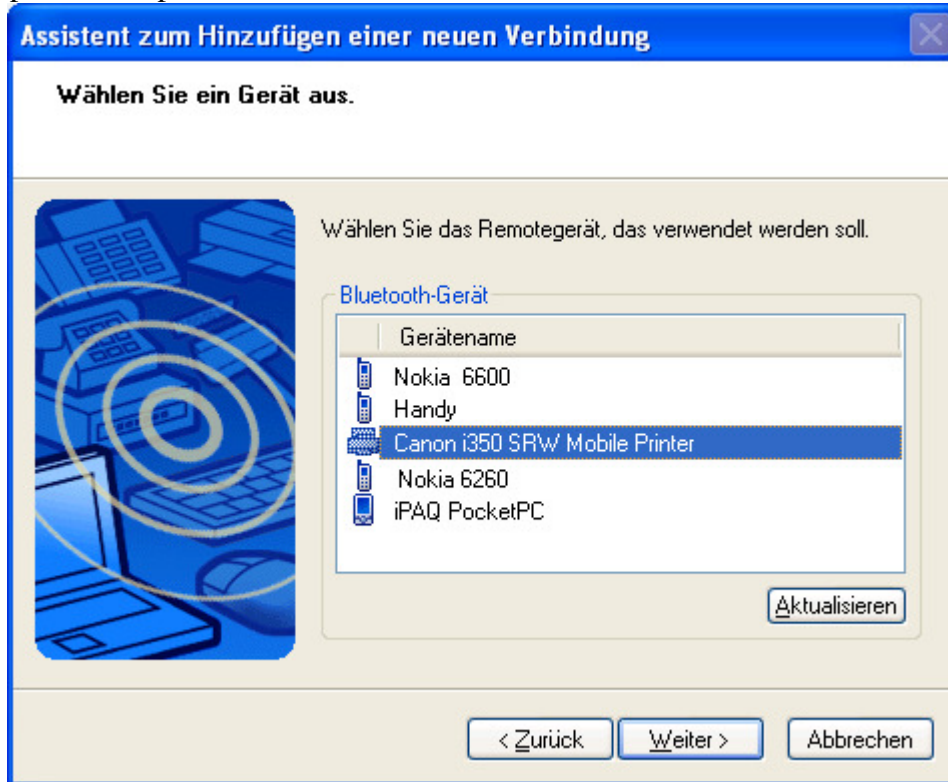


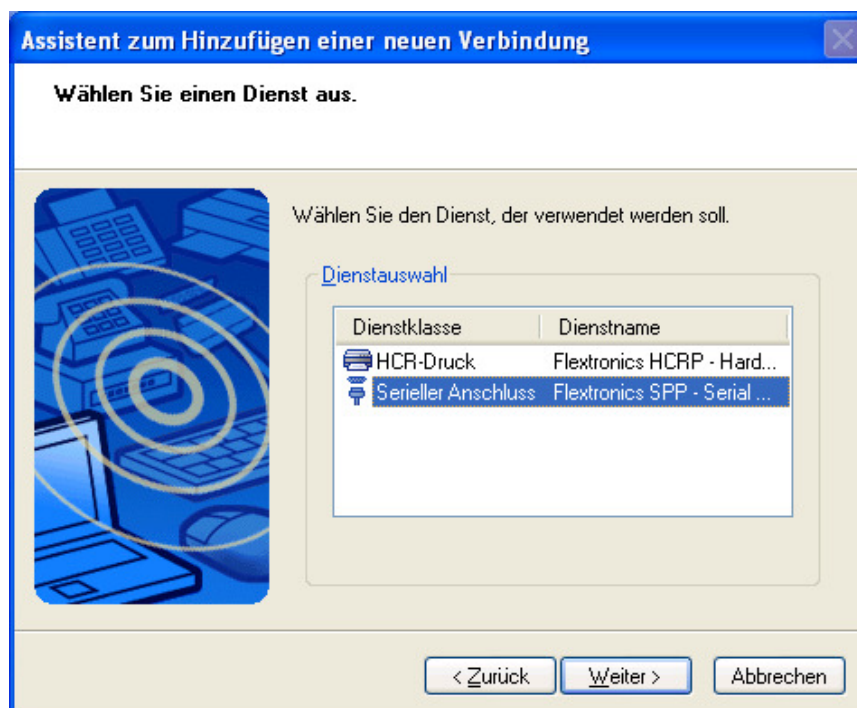
Please ensure, that the bluetooth software is installed already.

Search after devices in range.

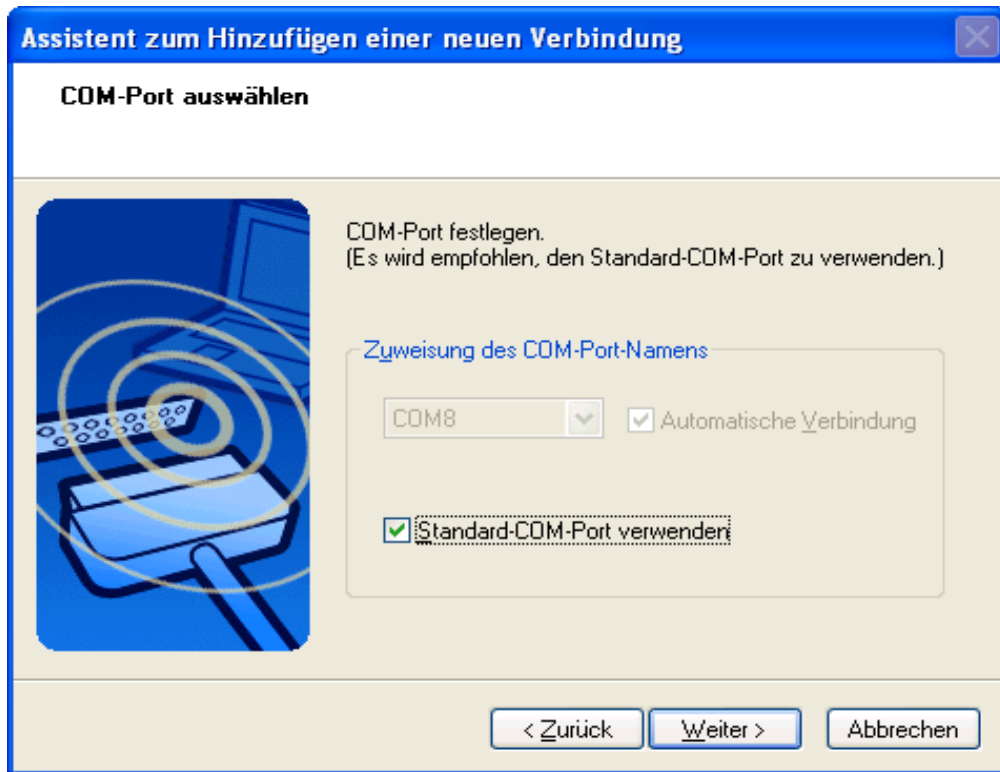
Select the printer and proceed with <next>.



Select the printer port -> <next>



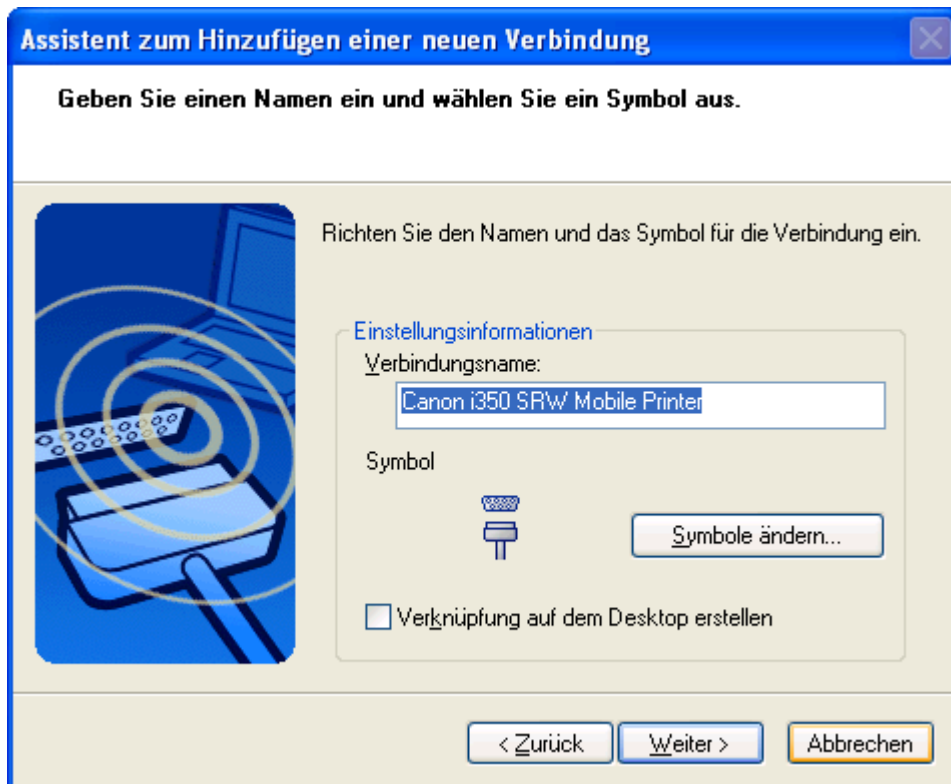
As standard com-port for the Bluetooth printer com-8 is used. This must be indicated then also for the printer configuration. If you should want to use a special COM haven, you must vote out the field "use standard COM port"



Install the printer software.



select the name for the com-connection and proceed with <next>



Select a printer name -> <next>



<finish> Select the com-port in the printer software